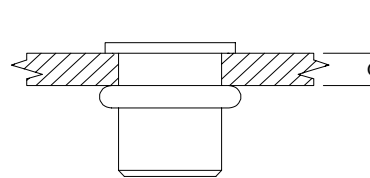
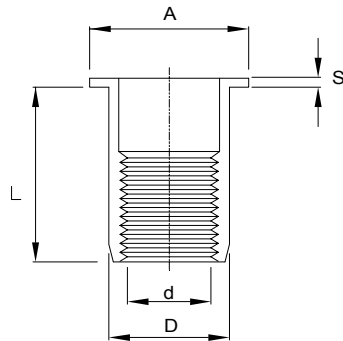


### Stainless Steel 304

**Large Flange**  
**Round Shank**  
**Open End**



THREAD SIZE (d)	GRIP RANGE (G)		DRILL HOLE (b) (+0.1)	PART NUMBER	BODY DIAMETER (D)	OVERALL LENGTH (L)	FLANGE DIAMETER (A)	LIP THICKNESS (S)
	min.	max.						
M4	0.5	2.0	6.0	G44 010	6.0	11.0	9.0	1.0
	2.0	3.5		G44 020		12.5		
M5	0.5	3.0	7.0	G45 040	7.0	11.5	10.0	1.0
	3.0	5.0		G45 050		15.0		
M6	0.5	3.0	9.0	G46 020	9.0	14.4	12.0	1.5
	3.0	5.5		G46 030		16.5		
M8	0.5	3.0	11.0	G48 010	11.0	16.0	15.0	1.5
	3.0	5.5		G48 020		18.5		
M10	0.8	3.0	12.1	G40 020	12.0	18.5	15.0	1.0
	3.0	5.0		G40 030		20.5		

Dimensions in millimetres

**Other sizes available, please contact our Sales Engineers.**

### Gripwell Fastening & Engineering Pte Ltd

10 Upper Aljunied Link, #03-03, York Int'l. Bldg. Singapore 367904

Tel: (65) 6289 6011 Fax: (65) 6280 7877

Email : gripwell@singnet.com.sg

Website : <http://www.gripwell.com.sg>

#### Gripwell Malaysia:

##### Kuala Lumpur Office:

Email : gripwell@po.jaring.my

Tel: (603) 5511 3393 Fax: (603) 5511 3382

#### Gripwell Thailand:

##### Bangkok Office:

Email : gripwell@ksc.th.com

Tel: (662) 713 7612 Fax : (662) 719 5003

#### Gripwell Indonesia:

##### Jakarta Rep. Office

Email : gripwell@cbn.net.id

Tel: (6221) 588 2802 Fax: (6221) 588 2803