

### Stainless Steel 316

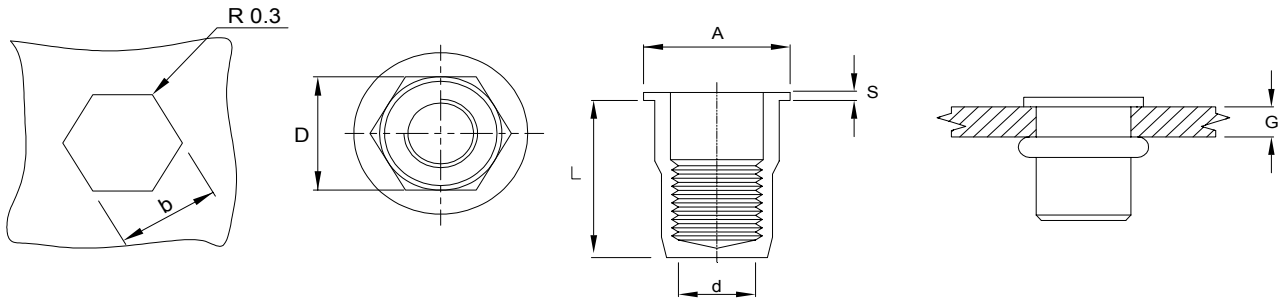
(contain Molybden)

Large Flange

Semi-Hexagonal Shank

Close End

High corrosion resistance



THREAD SIZE (d)	GRIP RANGE (G)		HEX HOLE (b) (+0.1)	PART NUMBER	HEX BODY (D)	OVERALL LENGTH (L)	FLANGE DIAMETER (A)	LIP THICKNESS (S)
	min.	max.						
M5	0.5	3.0	7.0	G55 520	7.0	17.5	10.0	1.0
M6	0.5	3.0	9.0	G56 470	9.0	21.5	12.0	1.5
M8	0.5	3.0	11.0	G58 260	11.0	23.5	15.0	1.5

Dimensions in millimetres

Other sizes available, please contact our Sales Engineers.

### Gripwell Fastening & Engineering Pte Ltd

10 Upper Aljunied Link, #03-03, York Int'l. Bldg. Singapore 367904

Tel: (65) 6289 6011 Fax: (65) 6280 7877

Email : gripwell@singnet.com.sg

Website : <http://www.gripwell.com.sg>

#### Gripwell Malaysia:

##### Kuala Lumpur Office:

Email : gripwell@po.jaring.my

Tel: (603) 5511 3393 Fax: (603) 5511 3382

#### Gripwell Thailand:

##### Bangkok Office:

Email : gripwell@ksc.th.com

Tel: (662) 713 7612 Fax : (662) 719 5003

#### Gripwell Indonesia:

##### Jakarta Rep. Office

Email : gripwell@cbn.net.id

Tel: (6221) 588 2802 Fax: (6221) 588 2803