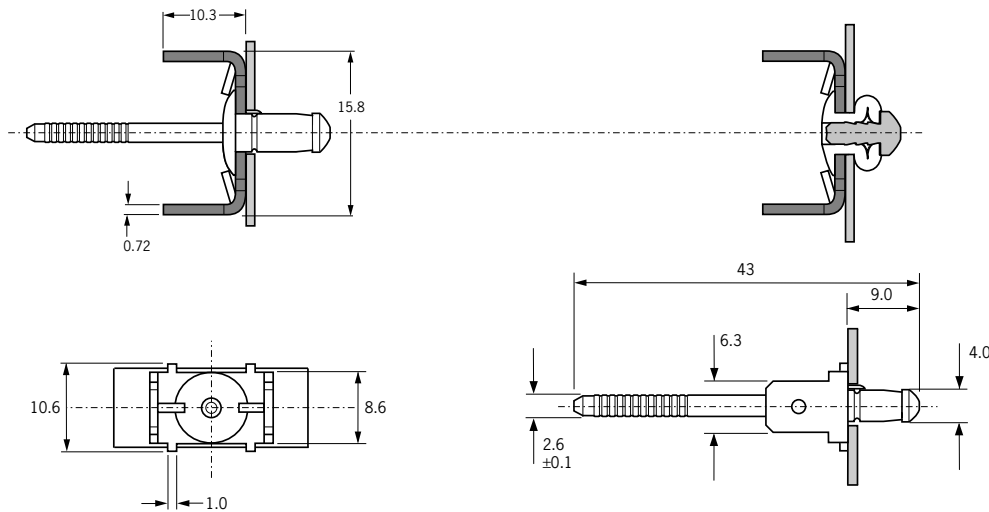


Steel Body and Mandrel with Brass Tab

Earth Tab Rivet BN11

	Material	Finish
Body	Low carbon steel to BS 3111 Type 0 SAE 1008 DIN 1654 QSt 34-2	Zinc plated and yellow passivated to BS EN 12329
Mandrel	Medium carbon steel to BS 3111 Type 1 SAE 1045 Werkstoff 1.0517	Zinc plated and yellow passivated to BS EN 12329
Tab	Brass DIN 17660 CuZn30	



Dimensions in millimetres

Hole Size ± 0.05	Grip Range		Part Number
	min.	max.	
5.2	1.0	1.5	OBN11-00509

- Earth Tab Rivet is designed to work on a single phase power supply of 240 volts or below.
- When fitted, Earth Tab Rivet provides a resistance at or below 0.1 ohms.
- Earth Tab Rivet has been tested and approved to EN 60335-1 (the procedure used by BEAB) and BS 3456 Part 201, clauses 27, 28, 31.
- To ensure the integrity of the connection, Textron Fastening Systems recommend the use of a connector which has a mechanical locking pip to lock into the hole of the male tab.

Installation Tools

The tables below show the range of Avdel® hand tools which can be used to place Earth Tab Rivet. For further information on installation tools please refer to pages 72-82. For further information on specific nose equipment, please contact your local TFS representative.

Fastener Size	Genesis®			
	G2 (7121)	G2-s (7140)	G3 (7122)	TX2000® Battery Powered
5.2	✓	✓	✓	✓